

MIKE

Software - Setup

4.0



TÜV SÜD Schweiz AG

Mattenstrasse 24, CH-4002 Basel, Switzerland

www.tuev-sued.ch products.bs@tuev-sued.ch

Cesana AG

Baiergasse 56, CH-4126 Bettingen, Switzerland

www.cesana-ag.ch info@cesana-ag.ch

Apparatus for determining the minimum ignition energy:

MIKE 3 CAN

New and improved version of the previous MIKE 3

Test condition: atmospheric

MIKE 4

Extended apparatus for tests under the following conditions:

Atmospheric, high temperature, reduced oxygen content



Please read this note!

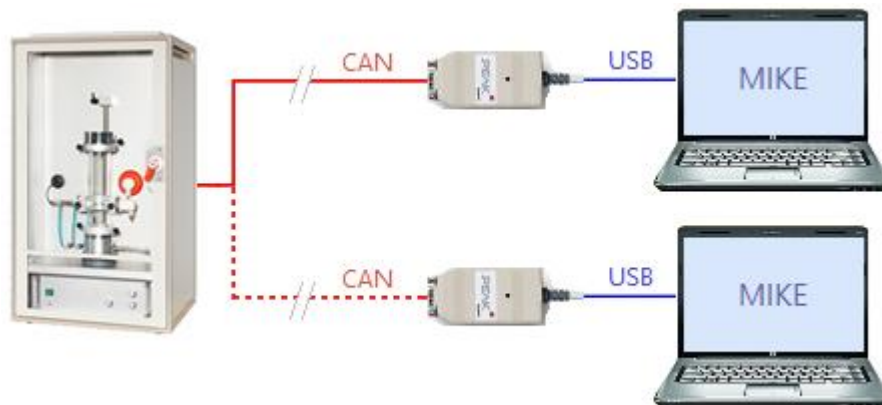


Attention: Please read this safety instruction carefully!

1. Hardware

Concept: The CAN bus (Controller Area Network) is a serial bus system. The CAN bus originally developed by the Bosch company for the automobile industry in 1983, is internationally standardized and is now widely used in industry as a fieldbus under various designations and data protocols. This bus is characterized by its robustness. Even cable lengths of up to 100m between MIKE and CAN-USB adapters are possible.

Connection of a MIKE to one or more PC's:



Personal Computer (PC):

Operating system Windows 10, 8.1, 7 (32/64-bit)

USB port (USB 3.0, USB 2.0 or USB 1.1) on the computer

Monitor resolution at least 1200 x 800

Connection options MIKE - PC:

Cable DSUB 9 pin
default



optical fiber
(Option)



Ethernet
(Option)

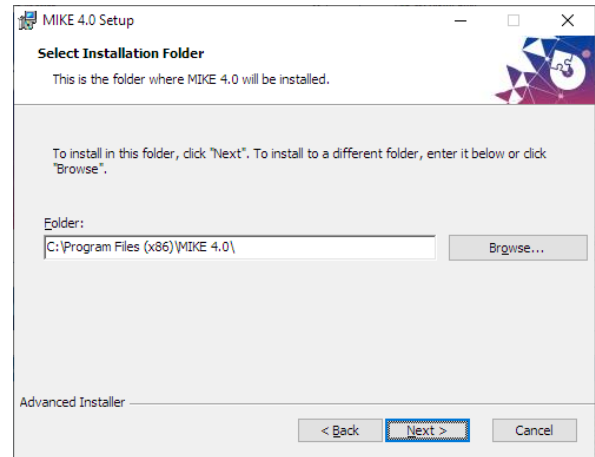


WLAN
(Option)



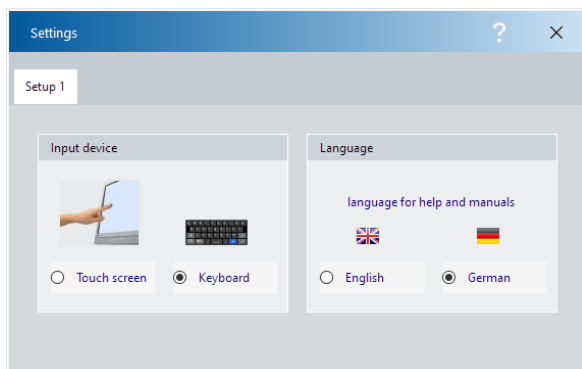
2. Software

Installation: Please run the following setup-file: **MIKE40_setup.msi**
For the installation of the CAN driver, **Administrator rights** are required.

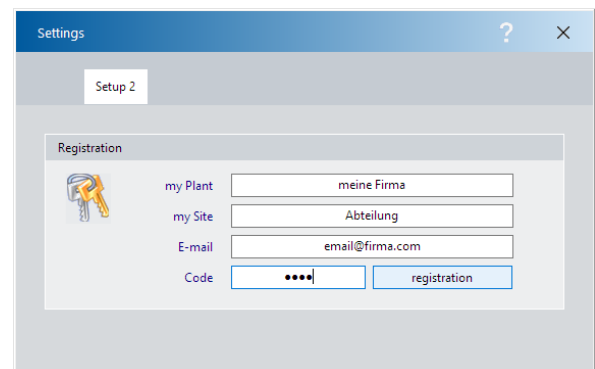


Start the MIKE-Software and follow the instructions:

1. Keyboard, language



2. Company, registration



For the registration code, please send an email to: **info@cesana-ag.ch**
Without registration, the function of the MIKE is only simulated.
However, you can view, evaluate and print MIKE files.

3. Administrator

Settings

Setup 3

1. Administrator

Signature e.g. John Smith John Smith

* Username e.g. JS JS

* Password

* Password confirmation

* not case sensitive

MIKE - filename

Identity Lab

4. Apparatus

Settings

MIKE

Apparatus

☒ MIKE 4 CAN - (USB)

☐ MIKE 3 CAN CAN - (USB)

☐ MIKE 4 is simulated not connected



MIKE file names (*Identity*)

Automatically generated file names always start with this "*Identity*", followed by the date the file was opened. The following letter differentiates files that were created on the same day.

Example: Lab_200730A.MIE

These automatically generated file names are only a suggestion. Of course you can enter your own file name (e.g. order number).

The extension of the file name is always ".MIE" and is added automatically.

Settings

Driver

CAN driver

1. Make sure the adapter is not connected

2. Install the driver now

3. Restart computer and connect the adapter

5. CAN-Driver

You need administrator rights for the installation. However, no special rights are required for later use.

Please do not use an USB extension cable between the CAN-USB adapter and the PC. This does not comply with the USB standard and can lead to malfunctions.

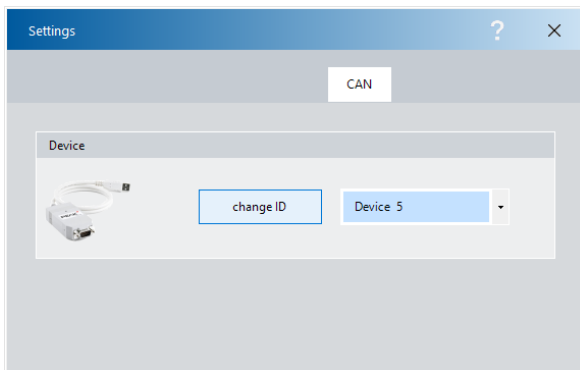


- Do **not** connect the CAN-Adapter.
- Install the **Peak** driver.
- Connect the CAN-Adapter to an USB-Port.
- Windows will notify you of the new hardware.
- Restart the MIKE program.



The CAN-USB adapter has a status LED:

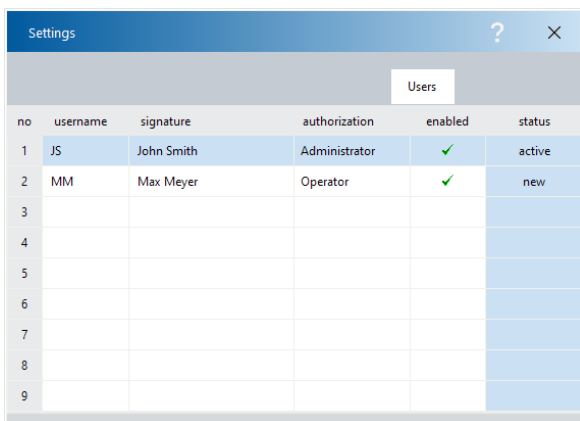
Always on: connected with Windows
 Slow flashing: connected with application
 Fast flashing: data is transmitted



6. Device-ID

If several equipment with CAN adapter are connected to your PC, these adapters must be clearly identified.

With a new adapter, this number is usually 255 (0xFF). However, you can easily change this number: *change ID*



7. User

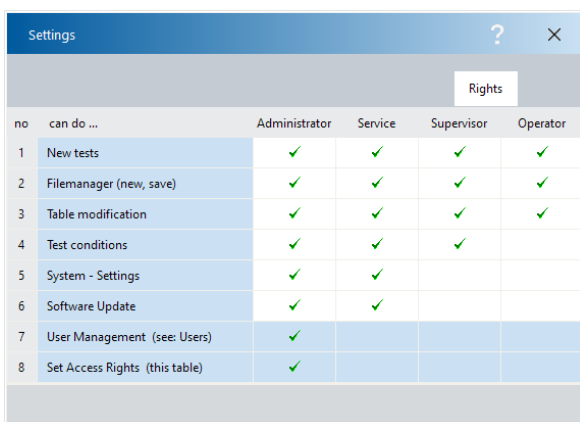
The main administrator is defined in step 3. More users can be added here:

"Administrator" for the user management.

"Service" for calibration and maintenance.

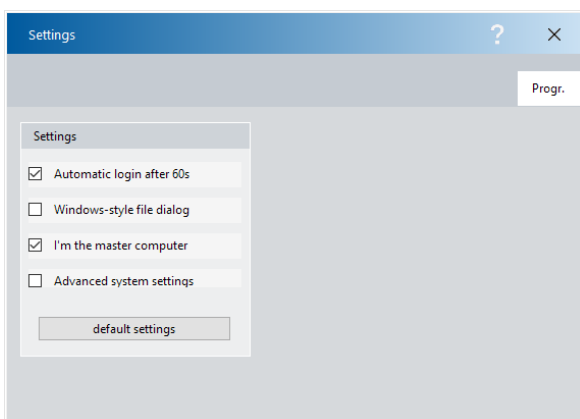
"Supervisor" for process monitoring.

"Operator" for all other users.



8. Rights

The rights of the 4 user groups can be defined here by the administrator.



9. Settings

Automatic login ...

Automatic program start after 60s.

Windows-style ...

File dialogs are in Windows style.

Master ...

If several PCs are connected to the MIKE, just one PC should be defined as primary PC.

Advanced ...

Allows access to service-programs.