

SIPCON 3

Cesana AG

Baiergasse 56, CH-4126 Bettingen, Switzerland

www.cesana-ag.ch

Electronics, software and support

info@cesana-ag.ch

+41 61 534 01 61

REMBE® Research+Technology Center GmbH

Zur Heide 39, D-59929 Brilon, Germany

www.rembe-rtc.de

Production, sales and support

info@rembe-rtc.de

+49 2961 7405 390

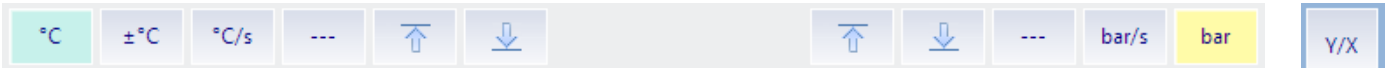


Further development of the Sipcon 2 measurement and control system

The Sipcon 3 measuring and control system replaces the previous control devices and multi-channel recording devices in the safety testing devices. However, the device can also be used universally as a data acquisition and control system.

Each Sipcon 3 contains 16 measuring channels for thermocouples and 2 inputs for pressure transmitters. Up to 4 independent test apparatuses can be operated from a single Sipcon. For this purpose, 4 software controllers are provided, each with an output for the Sip-Power module for controlling heating circuits.

PC-Software Sipcon 8.0

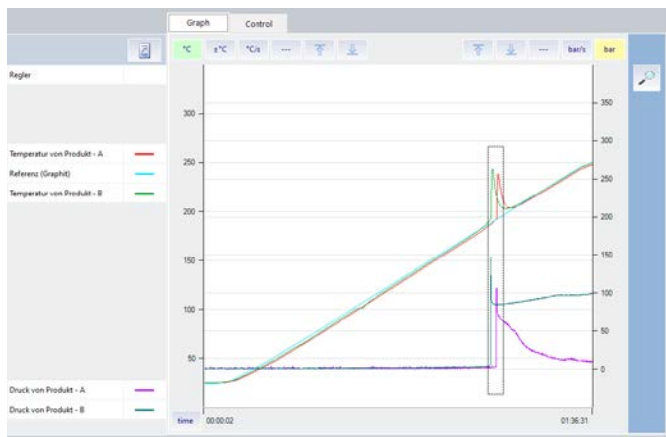


Graphic with double scaling and the units: °C, ±°C, °C/s, bar, bar/s

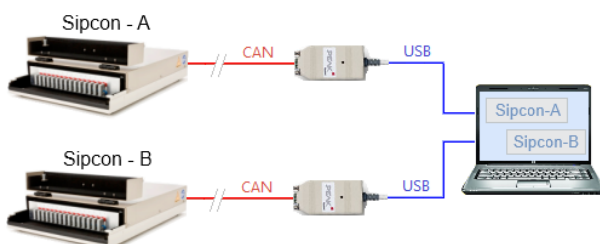
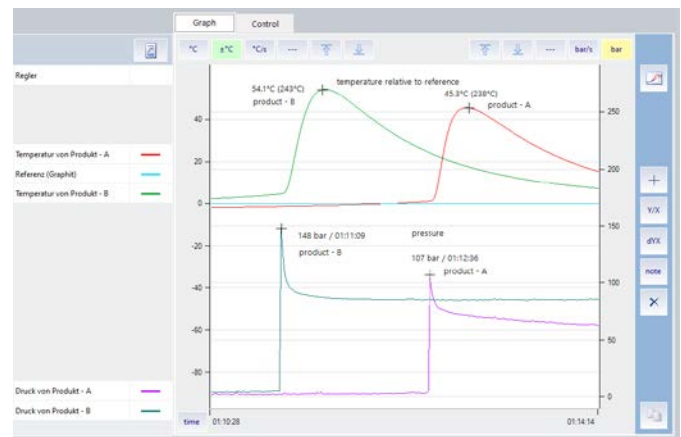
Previous Sipcon1,2 files can be displayed and conveniently evaluated.

The measurement results are displayed in numerical and graphical form, separated by test substance (product identification).

Linear heating, overview, absolute



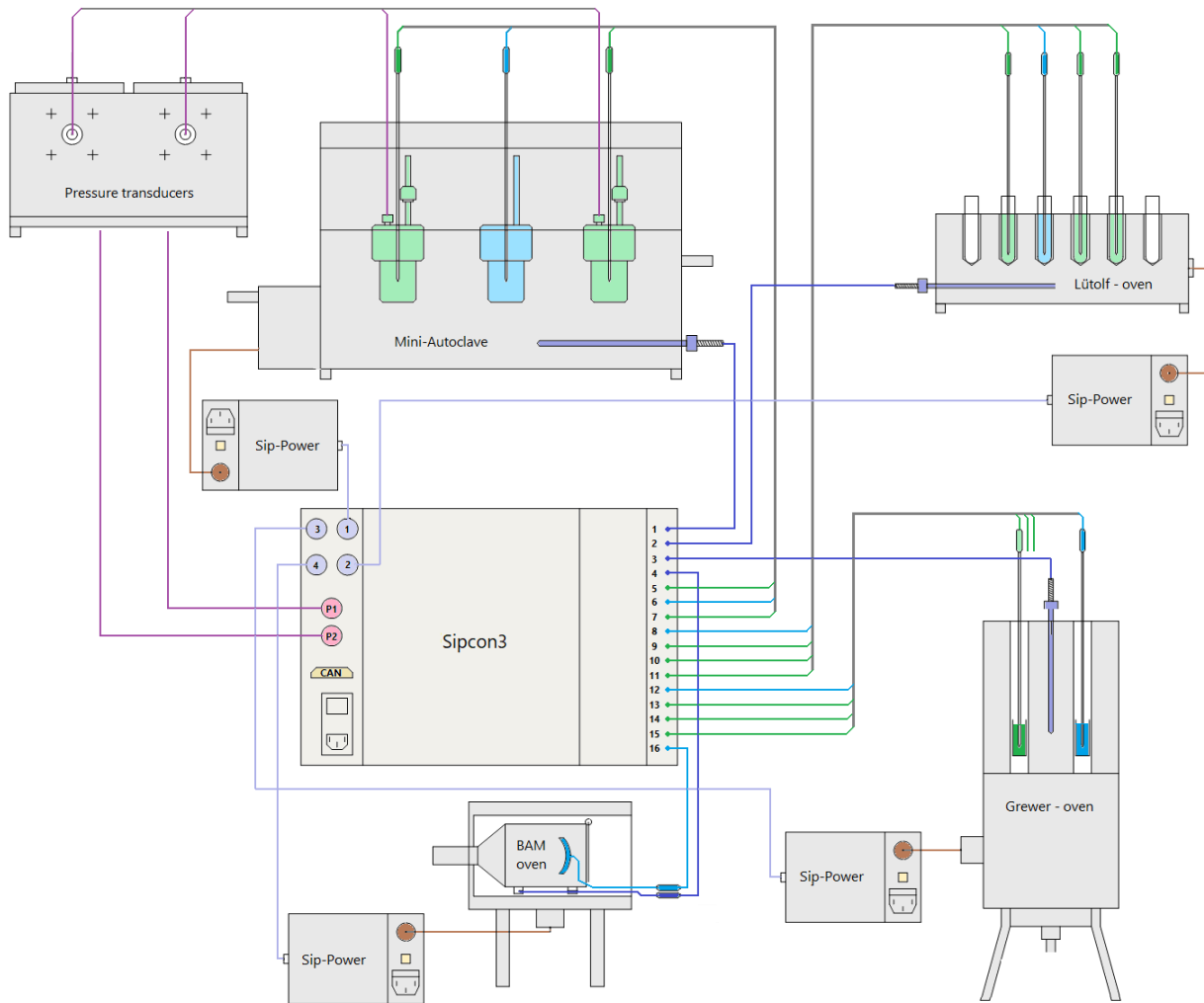
Linear heating, section relative to reference



The Sipcon is connected to the PC via the robust and flexible CAN bus. This concept also allows:

- Connection of **several** Sipcon to one PC
- Connection of one Sipcon to **several** PCs

Up to 4 independent test apparatuses can be operated from a single Sipcon.



Sipcon - Comparison	Sipcon 1 & 2	Sipcon 3
Measuring channels (temperature + pressure)	15	18
Thermocouple inputs (FeCuNi, NiCrNi)	(15)	16
Thermocouple - scanning time	≥ 1s	1s
Thermocouple resolution	18-bit	24-bit
Pressure measurement - inputs (4...20mA)	-	2
Pressure rise - sampling time	-	50ms
Pressure measurement - resolution	-	12-bit
Microprocessor	8-bit	32-bit
Variables, parameters	Integer	Floating point
Firmware update (Flash)	-	Yes
Data transfer to the PC	9.6K RS232	125K CAN bus
PC interface	RS 232 or USB	USB
Several Sipcon on one PC	only with SIPNET	Yes
Several PCs on one Sipcon	no	Yes