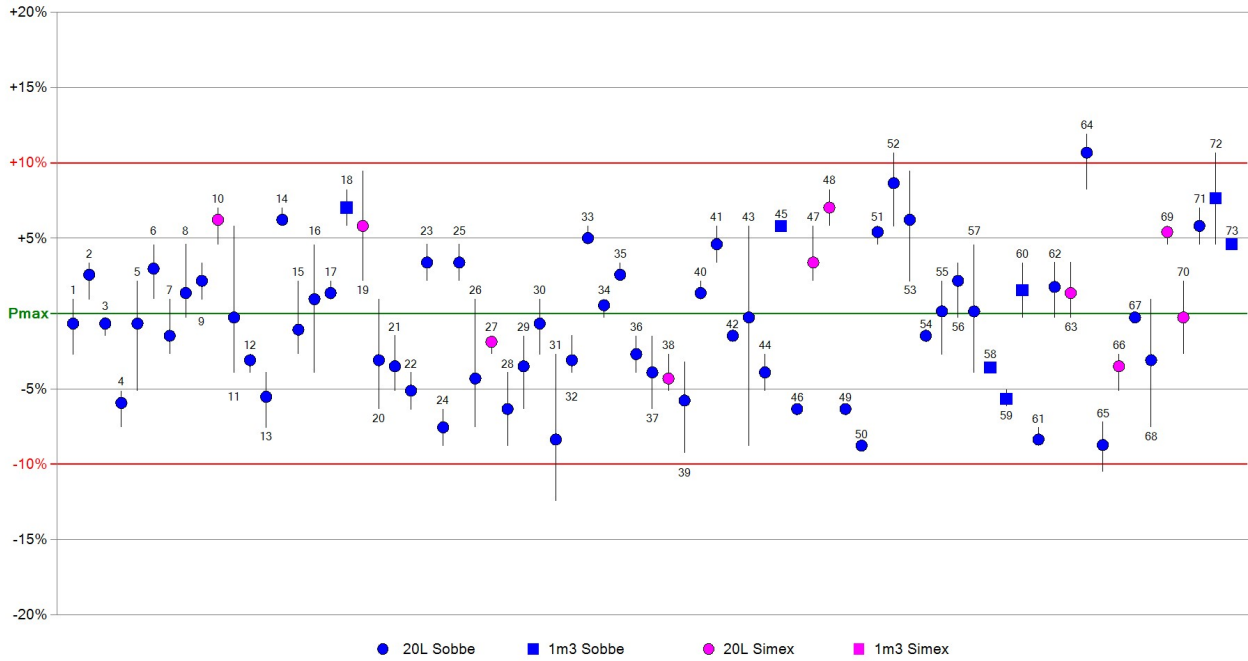


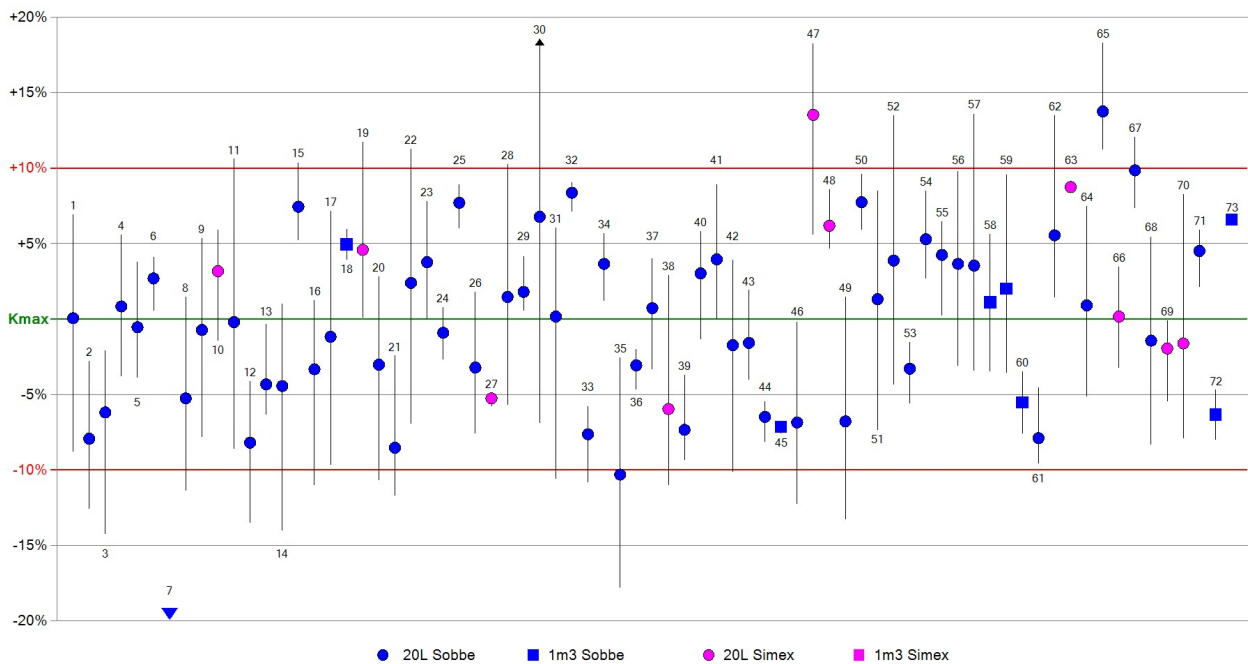
Progress / Fortschritt 31. January 2018

Calibration Round-Robin for the determination of the explosion characteristics of dusts Kalibrier-Ringversuch für die Bestimmung der Explosionskenngrößen von Stäuben

$P_{max} = 8.2 \text{ bar} \pm 10\% (7.4 \dots 9.0) @ 505 \text{ g/m}^3$



$K_{max} = 243 \text{ bar}\cdot\text{m/s} \pm 10\% (219 \dots 268) @ 677 \text{ g/m}^3$



Es = 1.6 mJ (Es/3 = 0.5 ... Es*3 = 4.7) @ tv = 115ms

